

FeralScan community pest mapping program



Peter West – Coordinator / Community support

NSW Dept. Primary Industries and Centre for Invasive Species





CONNECT

POWERED BY THE CENTRE FOR INVASIVE SPECIES SOLUTIONS



CITIZEN SURVEILLANCE - WHERE **YOU** HELP MAP FERAL ANIMALS AND THE DAMAGE THEY CAUSE
A LANDHOLDER, COMMUNITY, INDUSTRY, GOVERNMENT & BUSINESS COLLABORATION



RabbitScan



WildDogScan



FeralCatScan



FoxScan



FeralPigScan



ToadScan



MynaScan



MouseAlert



CamelScan



FeralGoatScan



FeralFishScan



StarlingScan



DeerScan

SUPPORTERS



Privacy Statement Copyright © 2009-2018 Invasive Animals Ltd. Technology by NewtonGreen and One West Design.



**Community
monitoring
(Co-created)**

**Empowering
community in
monitoring and
management**

**Citizen science
platform**

**Participatory:
Rabbit Biocontrol,
Wild Dog DNA,
National Carp
Survey.**

**Connect users
to groups and
services**

**Connecting
farmers to NSW
LLS programs**

**NEW incursions
community
tool**

**eg. Tilapia, REST,
Corn snakes,
exotic birds,
community
tool
(in development)**

Overview

1. Custom and co-designed 2014, 2016-18
2. Address community need (ongoing)
3. 120,000+ pest records and images
4. 18,500 registered users + 14,000 extras
5. 300+ groups (eg landholder groups)
6. **Promote coordinated community action**
7. Share data with Biosecurity groups
8. Complement other systems
9. CISS hosted service till 2022.



Website, Apple/Android App (offline mapping)



LOG IN

REGISTER

Search

GO

You are Here

WildDogScan

WILD DOG

SCAN

COMMUNITY MAPPING

WHERE YOU HELP MAP FERAL ANIMALS

AND THE DAMAGE THEY CAUSE

A LANDHOLDER, COMMUNITY, INDUSTRY, GOVERNMENT & BUSINESS COLLABORATION

Home

Get involved

Register

Register your Group

Photo Gallery

Regional partners

Support

Visit PestSmart website

Record Wild Dog activity in WildDogScan

How to use WildDogScan in 2018

WildDogScan is a free resource for landholders, community groups and pest controllers. Use WildDogScan to map wild dog activity, document wild dog problems, inform your neighbours and local biosecurity authorities, and identify priority areas for control.

Find out more (Watch this short video)

Record sightings, evidence, impacts and control

Use the WildDogScan website and App to record wild dog activity, document the damage caused by wild dogs, and map your control activities. Create a local wild dog map, and work with your neighbours to coordinate wild dog control together.

Start Mapping or Register new user

Download the Mobile App

Available on the iPhone

App Store

Download Apple iOS App

ANDROID APP ON Google play

Download Android App

LOG IN

REGISTER

Record Wild Dog Activity

START MAPPING

Recent Records

11,653

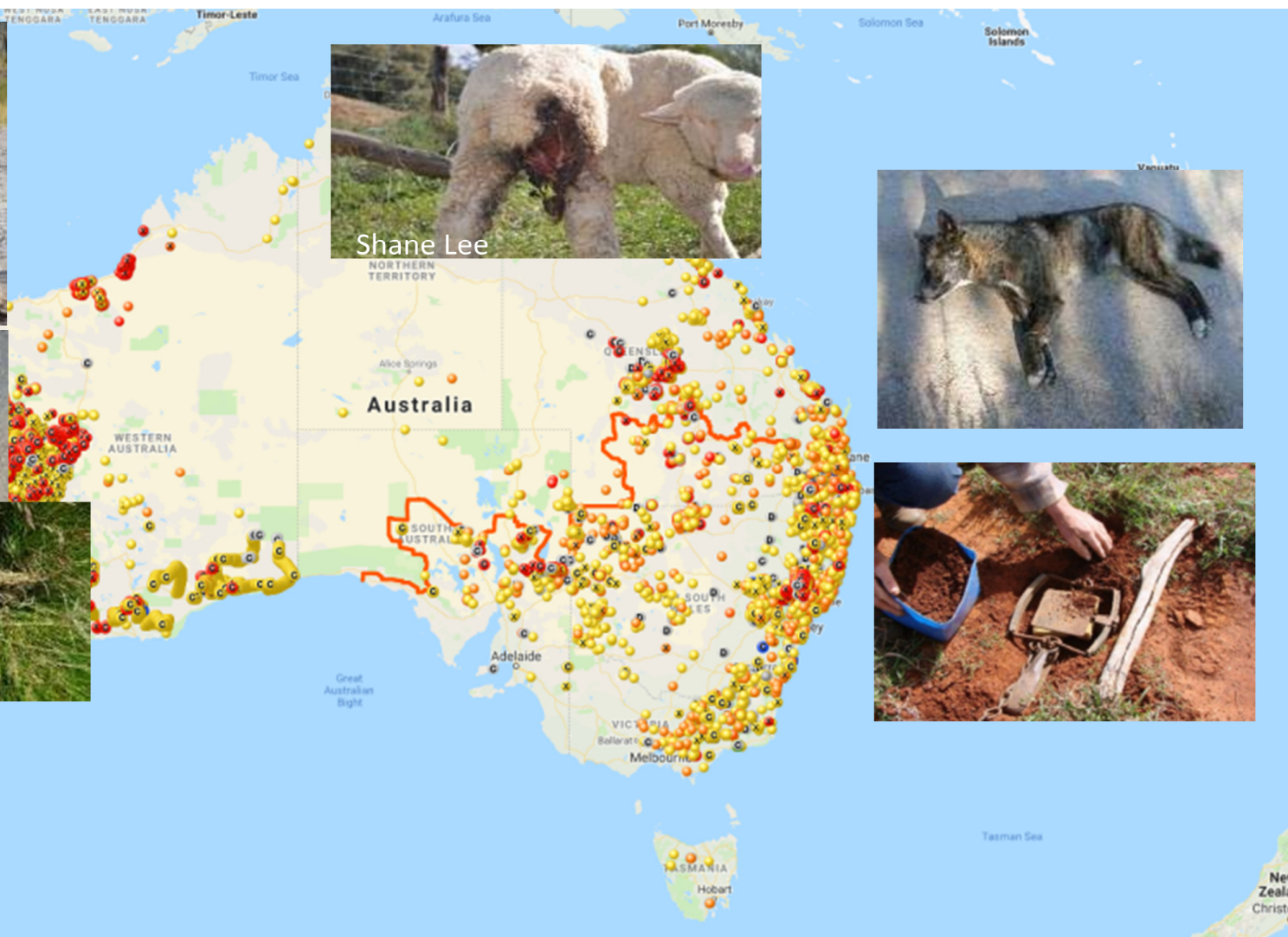
TOTAL RECORDS

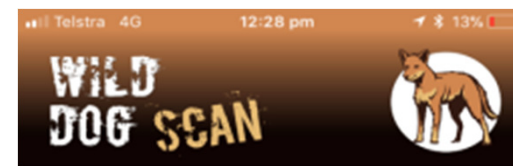
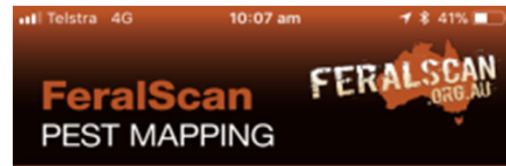
20,479

Alert your local biosecurity groups about wild dogs

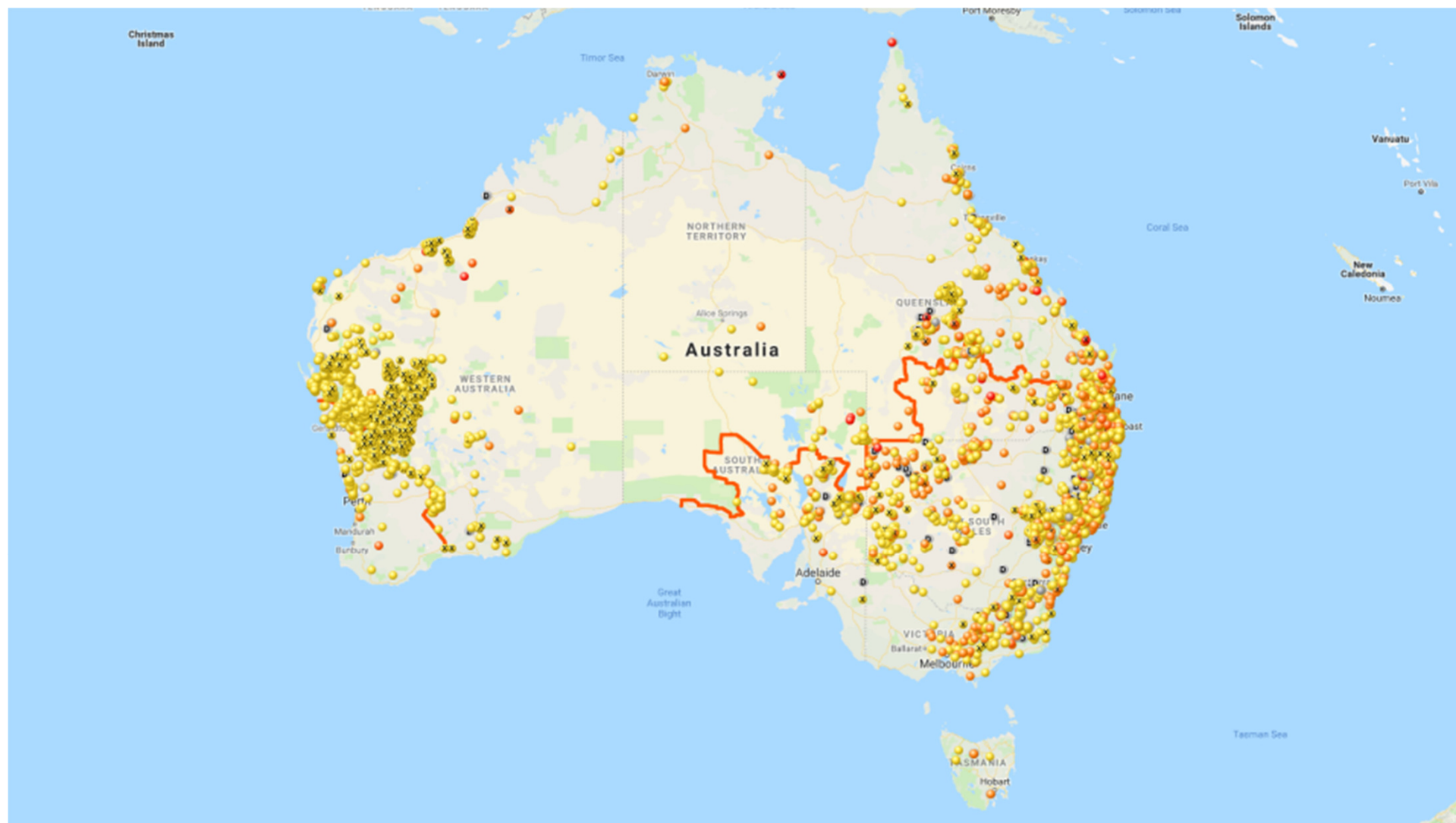


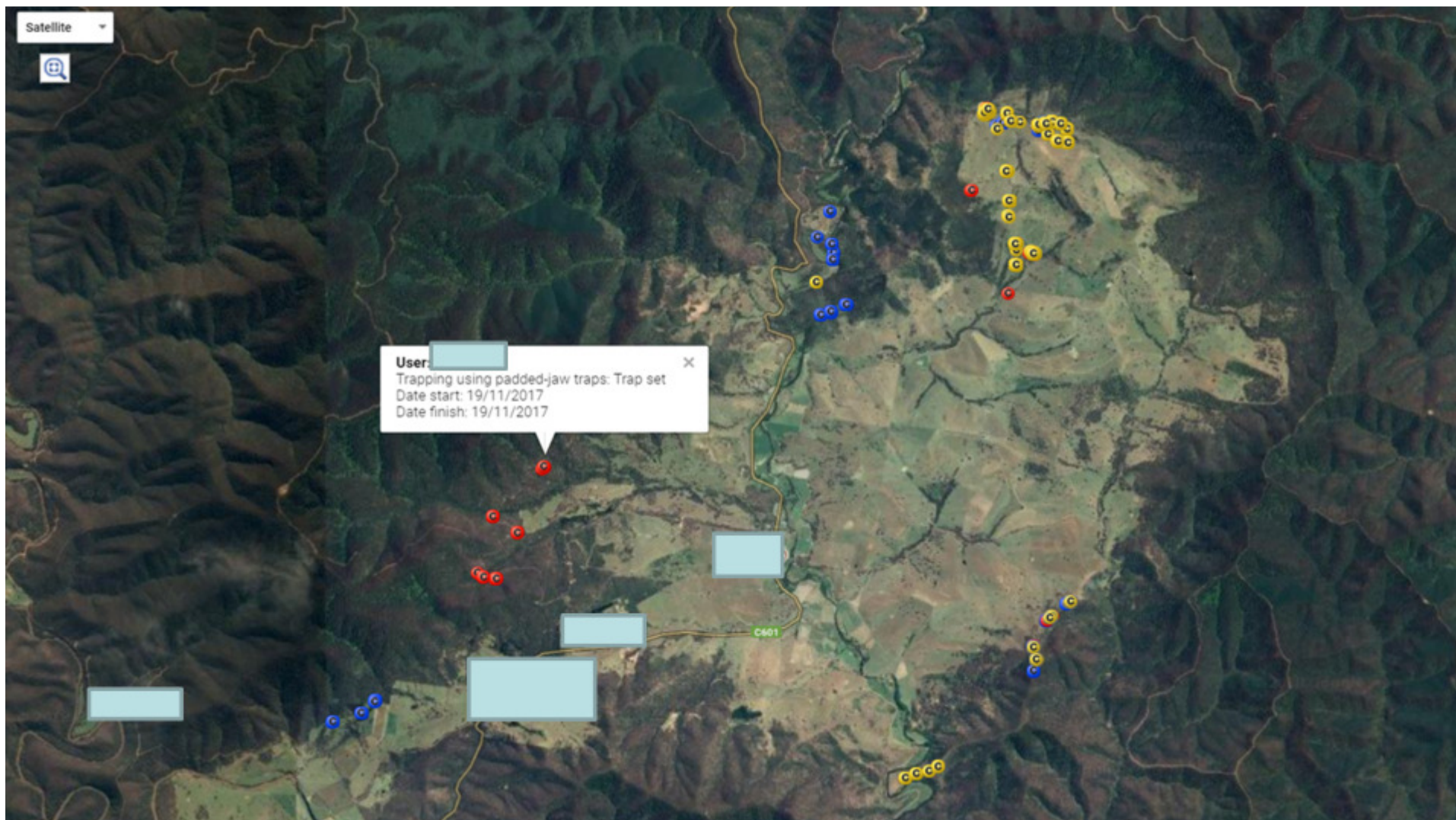
Shane Lee

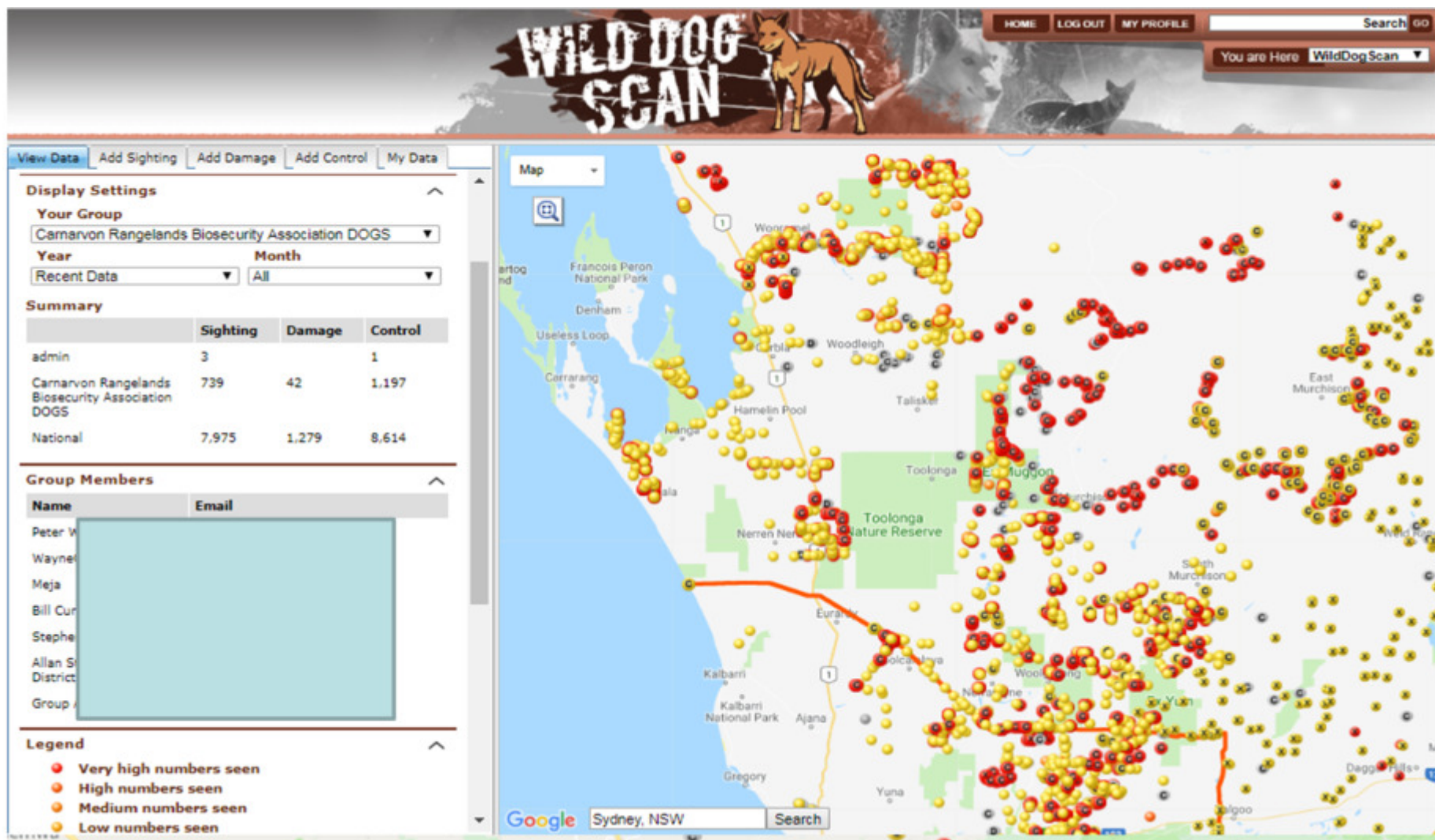


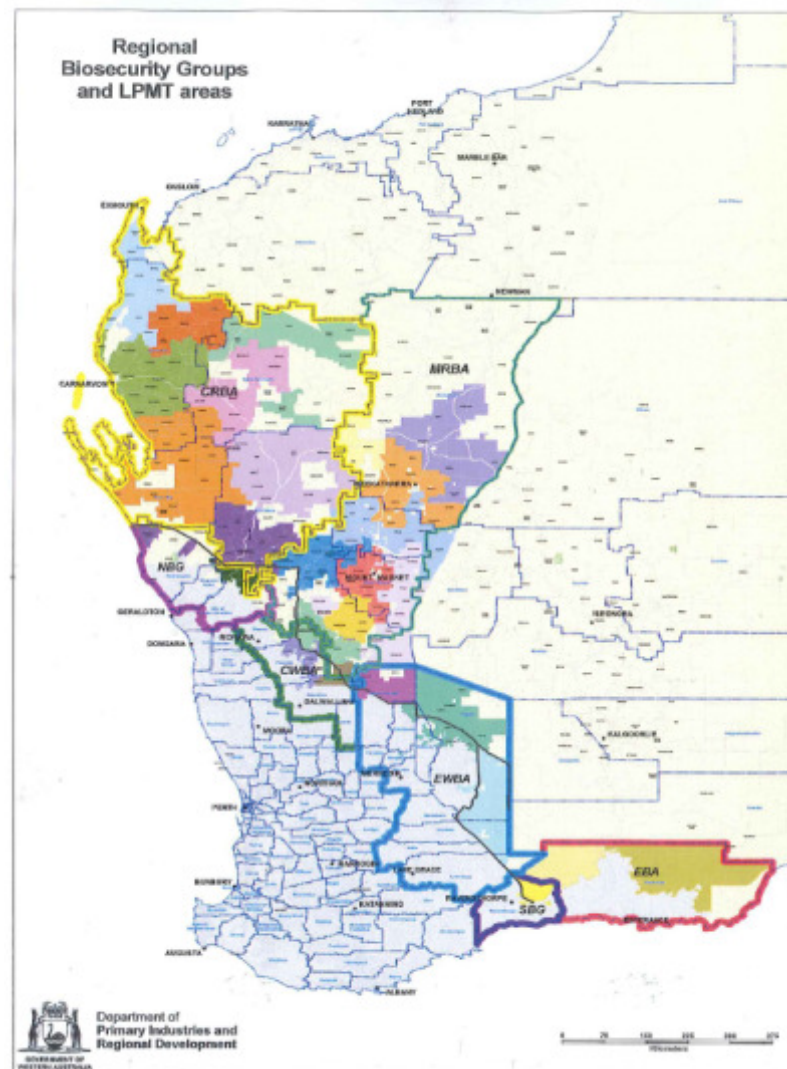


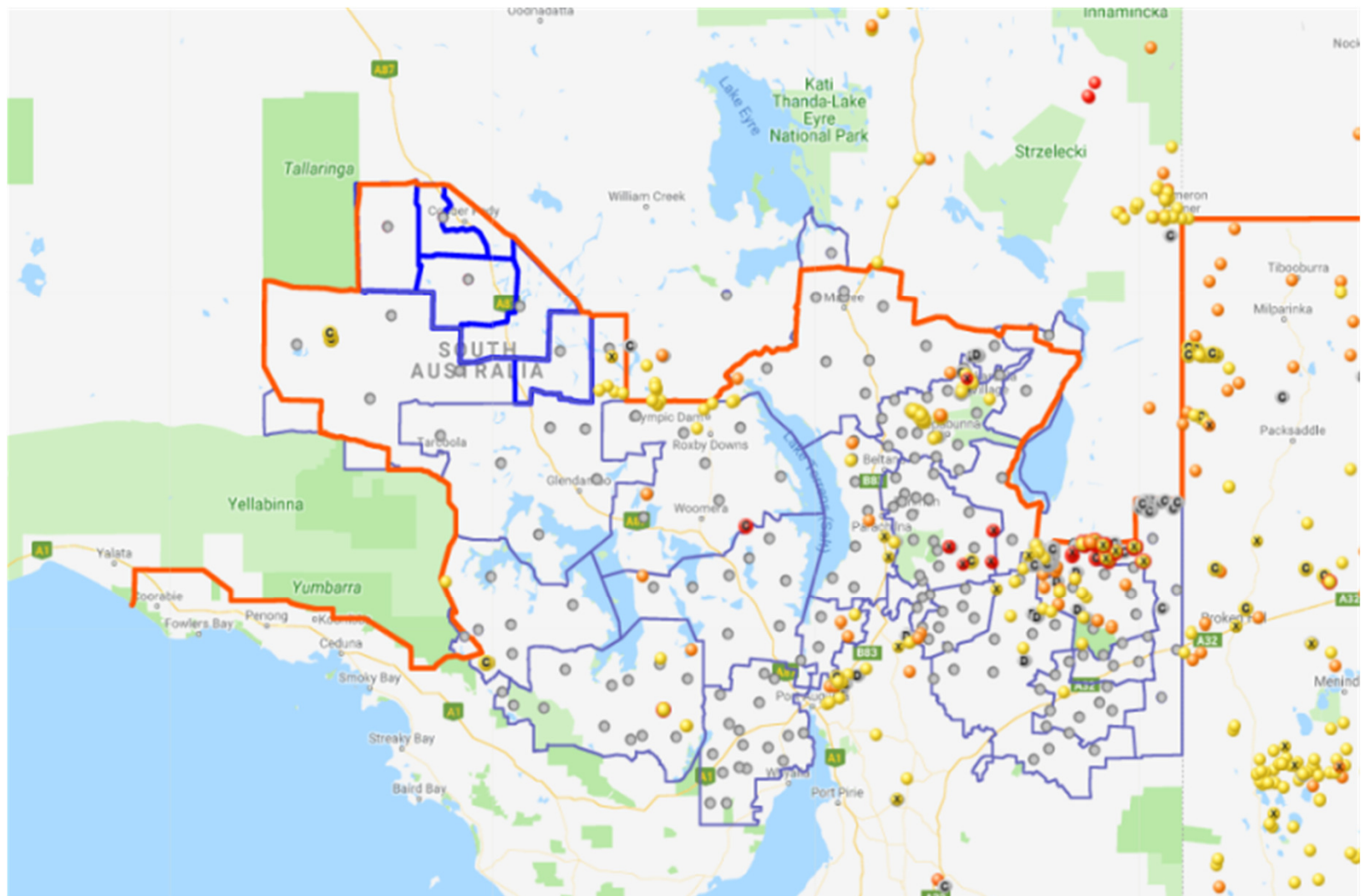
Apple/Android Apps works offline














WILD DOG SCAN



HOME

LOG OUT

MY PROFILE

Search GO

You are Here

WildDog Scan

View Data

Add Sighting

Add Damage

Add Control

My Data

Display Settings

Your Group

Chandler River WDCA

Year

Recent Data

Month

All

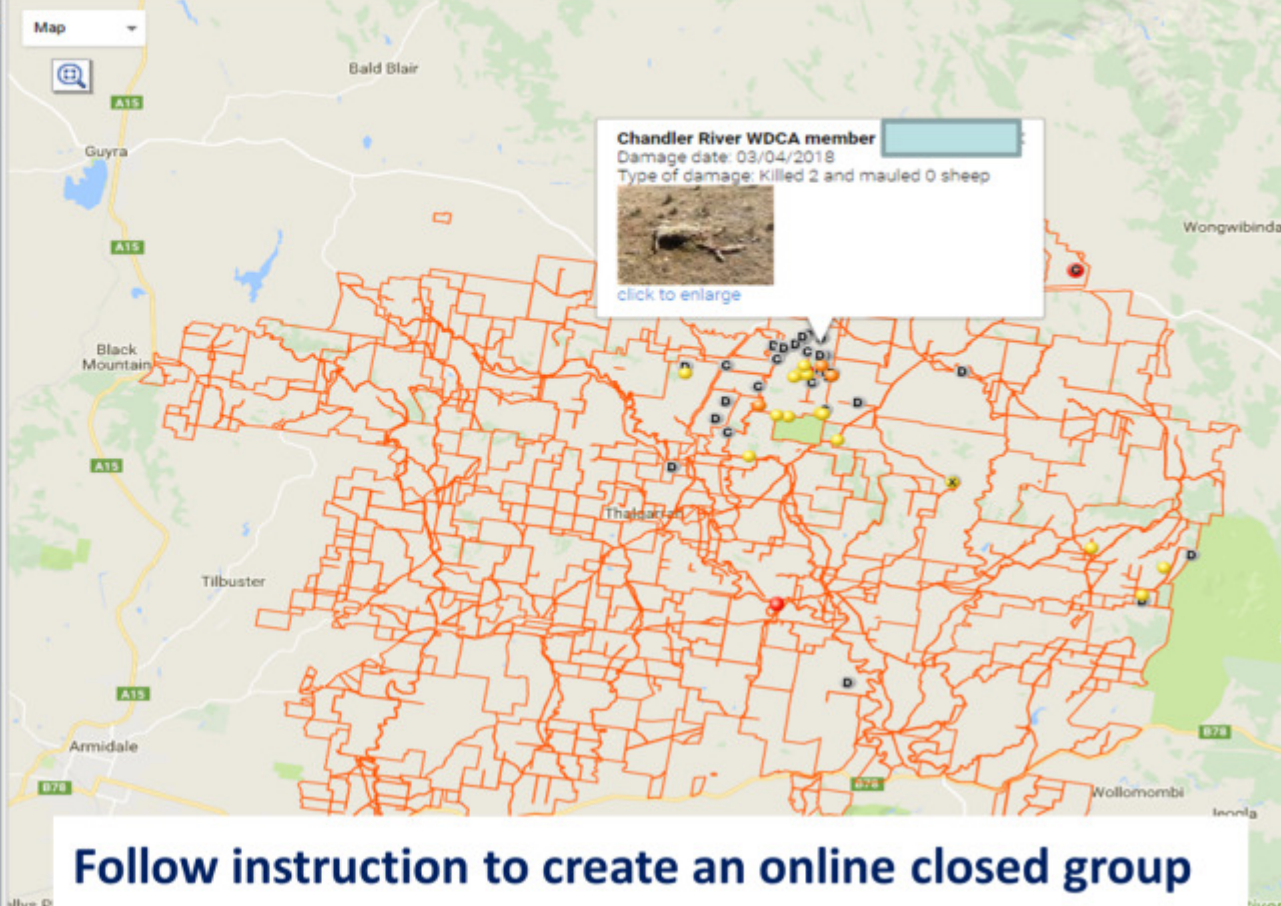
Summary

	Sighting	Damage	Control
Peter West			1
Chandler River WDCA	38	37	14
National	6,366	1,103	-

Group Members

Name	Email
Peter	
krie	
Henry	
Rocky	
royrol	
brett.	
Matt	
Dan	
Adam	
david	
Dave	
Giles	
Charli	
Hugh	
Aaron	
Leone	


Map



Chandler River WDCA member

Damage date: 03/04/2018

Type of damage: Killed 2 and mauled 0 sheep



[click to enlarge](#)

Follow instruction to create an online closed group

Alert your landholder group and biosecurity authorities.

View Data

Add Sighting

Add Damage

Add Control

My Data

Return To Home

Print Friendly

To create a new wilddog sighting, click the Add Sighting tab above. Fill out the details and then click the Submit button. To add a damage site or control location use the Add Damage and Add Control tabs.

To view your existing sites, click the My Data tab above.

Display Settings

Your Group

North East Singleton Wild Dog Association

Year

Recent Data

Month

All

Summary

	Sighting	Damage	Control
Peter West	1		
North East Singleton Wild Dog Association	44	10	94
National	3,938	792	-

Group Members

Name	Email
Peter W	
Heath E	
Mark H	
Hank B	
Jamie P	
Chris B	
Nev B	


Map

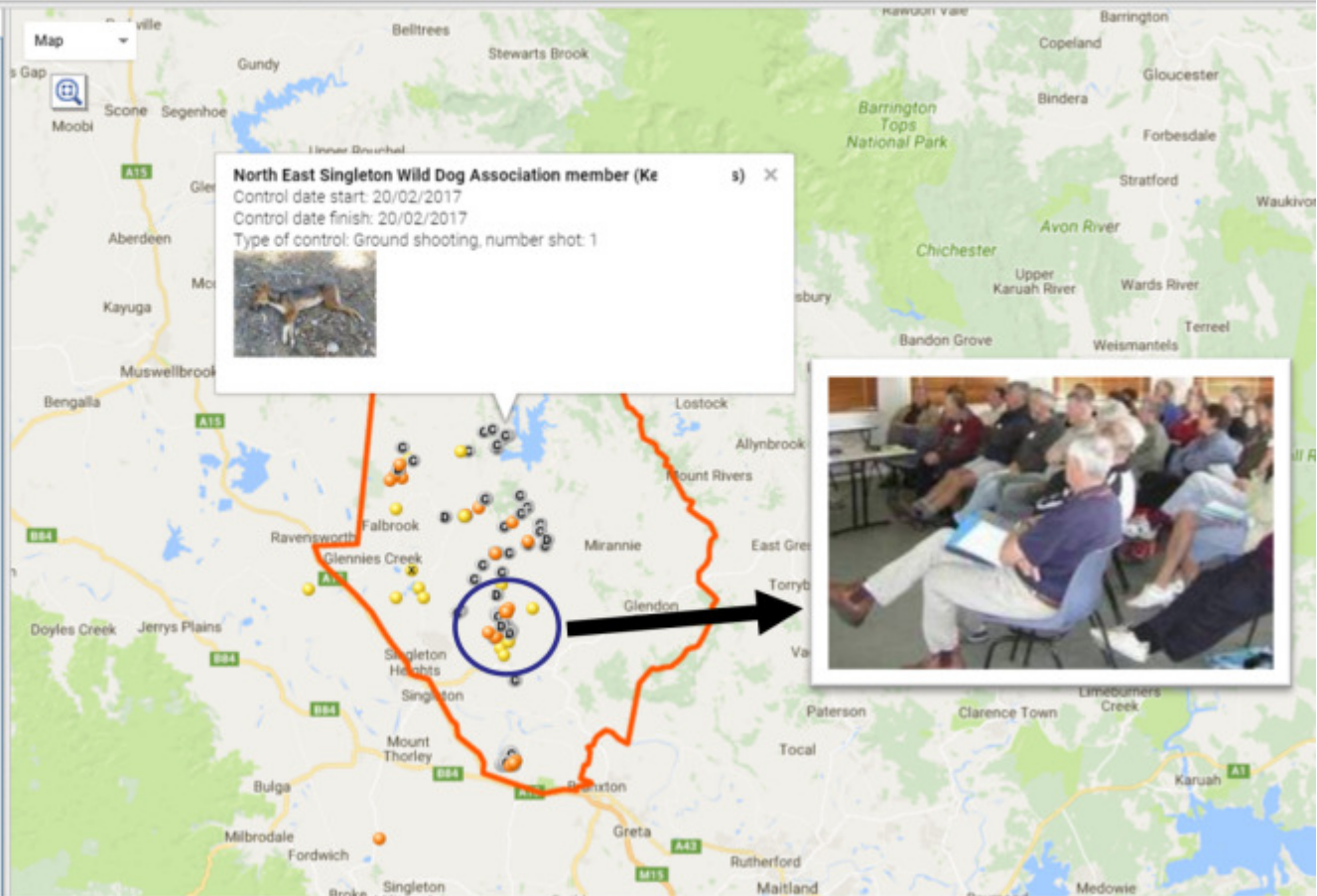
North East Singleton Wild Dog Association member (Ke)

Control date start: 20/02/2017

Control date finish: 20/02/2017

Type of control: Ground shooting, number shot: 1





Empowering landholders with free/easy mapping tool



WildDogScan- New damage record

[VIEW RECORD](#) (You can click on the marker to view more information)

Created by:

Name: [billymax56@iclo](#)

Email: [jbmaxwell@bigp](#)

Username: [billymax56@](#)

Record details:

Date: 15 Oct 2018

Latitude: -30.30947723

Longitude: 152.44161506

Summary: Killed 1 and mauled 0 sheep,

Image: No

Type: Public

Comments:

For further information, please contact Peter West
0407 622 191.



(1,800 since October 2016)

**All wild dog attacks in NSW are
communicated to NSW regional
biosecurity staff in real-time.**

How to setup Alert Notifications for a user group:



Group Members

Name	Email
Peter T	pete...@nsw.gov.au
Kristie	kirst...@nsw.gov.au
Henry	wal...@nsw.gov.au
Rocky	rock...@nsw.gov.au
royro	royr...@nsw.gov.au
brett.c	au brett...@nsw.gov.au
Matt C	kilco...@nsw.gov.au
Dan	dani...@nsw.gov.au
Adam	aher...@nsw.gov.au
davids	bob...@nsw.gov.au
Dave T	dave...@nsw.gov.au
Giles	giles...@nsw.gov.au
Charlie	achil...@nsw.gov.au
Hugh T	hugt...@nsw.gov.au
Aaron	aaro...@nsw.gov.au
Leonai	cam...@nsw.gov.au
Mark C	mca...@nsw.gov.au



Next: Evaluate Email notifications
Trial SMS notifications



SUMMARY



MAP

DISPLAY SETTINGS

Saved Filters

Chandler River WDCA × ▾

Date Period

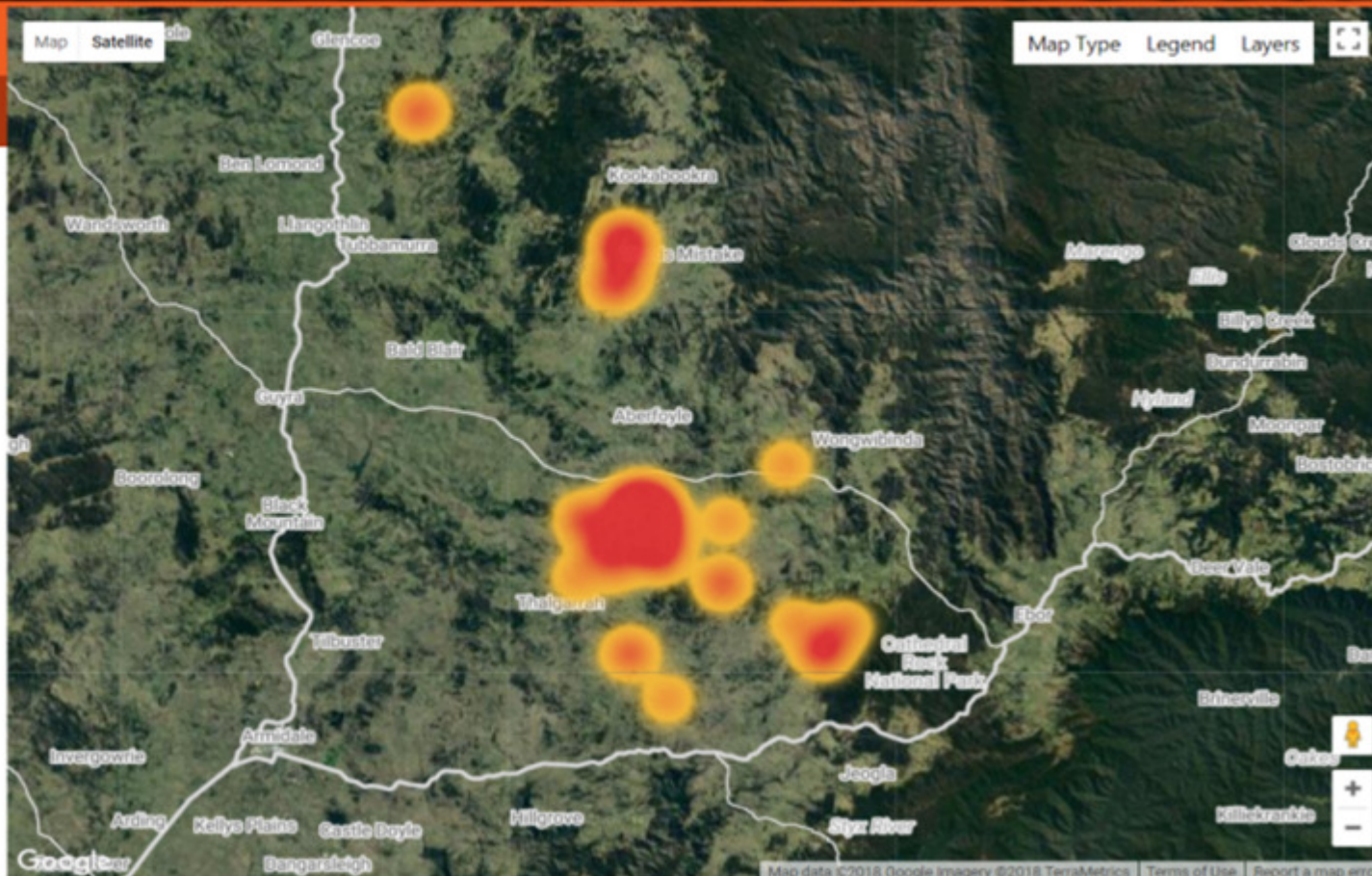
Past Year × ▾

02/11/2015 to 20/04/2018

Reported By

Chandler River WDCA × ▾

PRINT



SUMMARY

MAP

DISPLAY SETTINGS

Saved Filters ▼

Date Period ▼

01/01/2017 to 04/04/2018

Species ▼

Types ▼

Data Fields ▼

Regions ▼

- less options -

SEARCH

PRINT

SAVE

MANAGE FILTERS

Summary

WildDog



Type

Sighting

Damage

Control

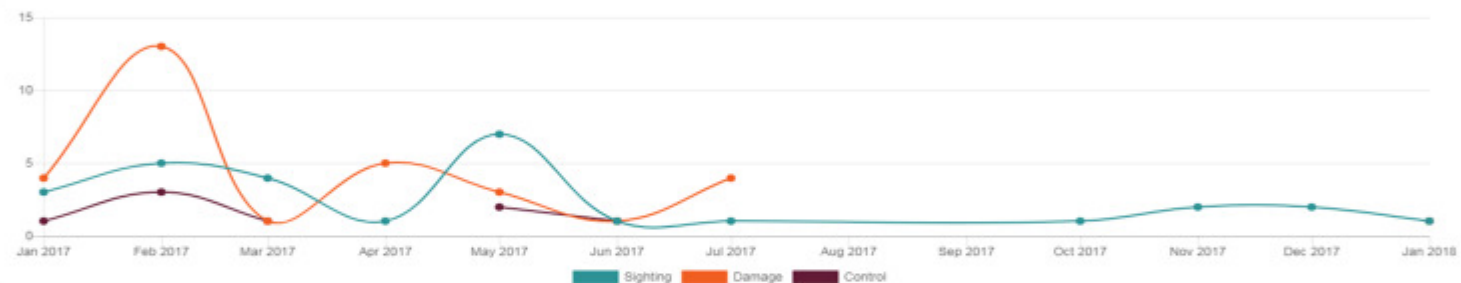
Count

28

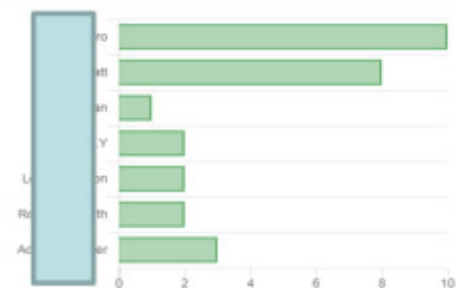
32

8

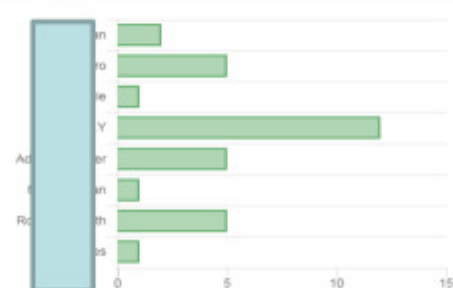
Total Records



Sighting



Damage



Control



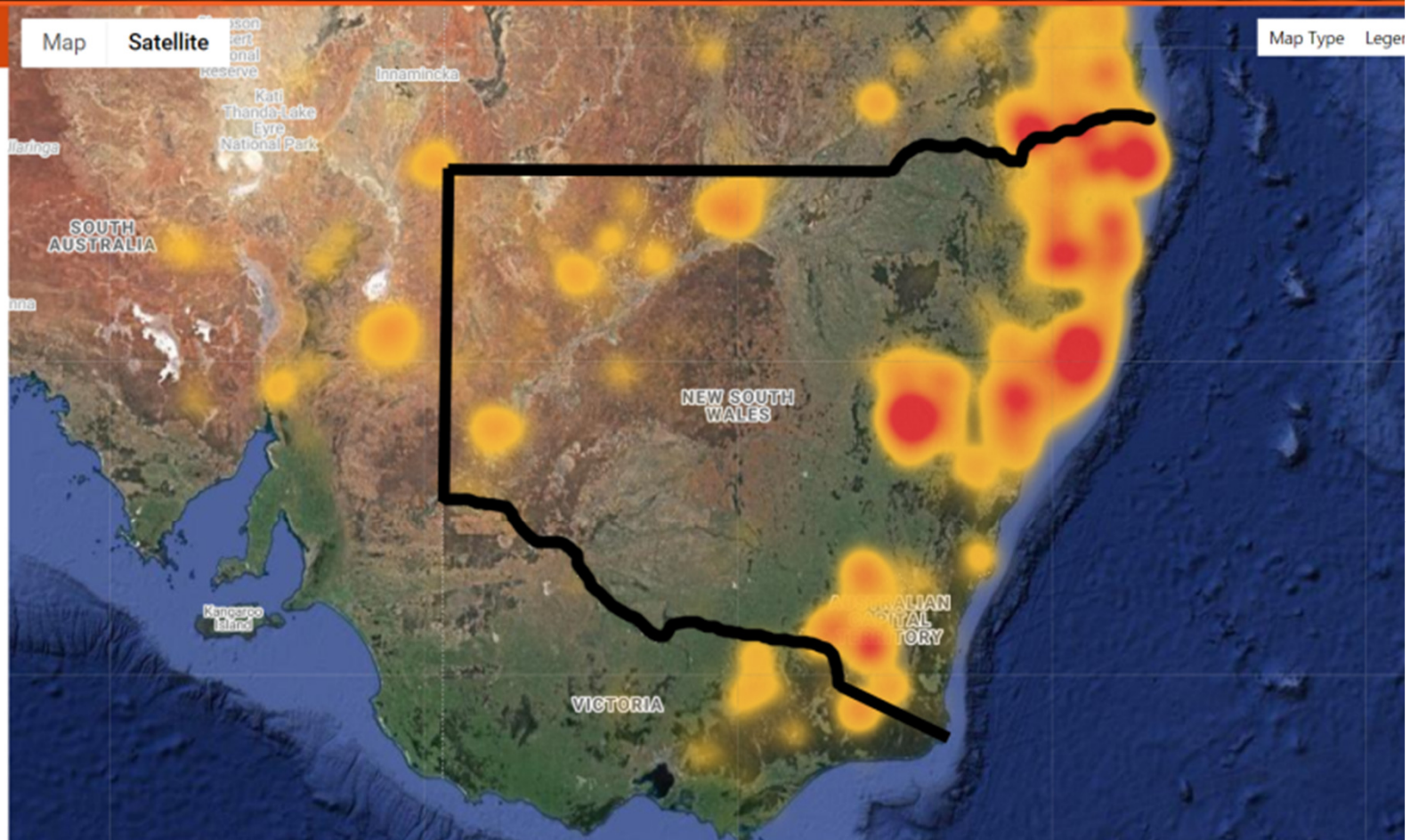
 **MAP**

Close

Map

Satellite

Map Type Legend



LOG OUT

MY PROFILE

Search 100

You are Here

DeerScan

FERAL DEER SCAN

COMMUNITY MAPPING

WHERE YOU HELP MAP FERAL ANIMALS AND THE DAMAGE THEY CAUSE

A LANDHOLDER, COMMUNITY, INDUSTRY, GOVERNMENT & BUSINESS COLLABORATION

Home

Species in Australia

Get involved

Register

Register your Group

Photo gallery


Support

Visit PestSmart website

DeerScan will be going live on Monday 15 October 2018.

Record Deer sightings in DeerScan

How to use DeerScan in 2018



DeerScan is a free community resource for landholders, community groups and pest controllers. DeerScan can be used to map sightings, report problems or damage caused by deer, and document your control actions. It can be used to inform your neighbours and local biosecurity authorities about current feral deer problems.

[Learn more >](#)

Record sightings, evidence, impacts and control



Use the DeerScan website and App to record deer activity in your local area. Information you enter can be supplied to local biosecurity organisations to help manage the pest.

[Start Mapping](#) [or Register new user](#)

[or Register a community group.](#)

Download the App (available in late October 2018)

Available on the iPhone

App Store

Download Apple iOS App

GET IT ON Google play

Download Android App



LOG OUT

MY PROFILE

Record Deer Activity



Recent Records

40

TOTAL RECORDS

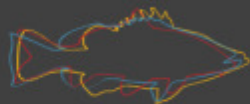
61

ADVICE

- Email your control tips to deerscan@feralscan.org.au and we will display them on this website

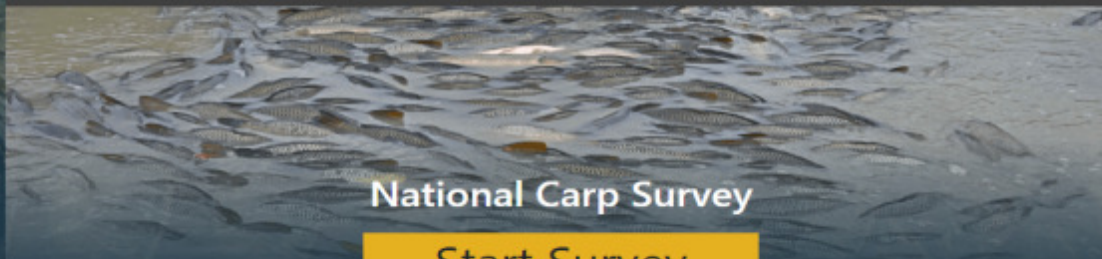
NEW FEATURES

- Upload your deer photos



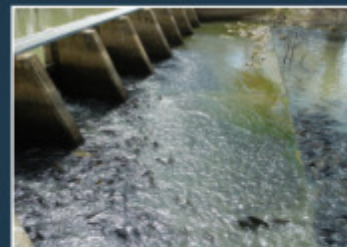
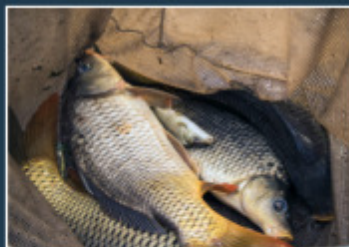
NATIONAL CARP CONTROL PLAN
RESTORING NATIVE BIODIVERSITY

Have you seen Carp in your local waterways?



Start Survey

The National Carp Control Plan needs your help to record where you have seen carp aggregating in high numbers to plan future carp control programs. We invite you to take part in this important 3-minute survey.



NATIONAL CARP CONTROL PLAN
RESTORING NATIVE BIODIVERSITY

[About NCCP](#) [Contact Us](#) [Privacy](#) [Legal](#) [Supported by FeralScan](#)

© 2018 Fisheries Research & Development Corporation



American Corn Snake

Photo by Ian Deery



Red-eared Slider Turtle

Photo by Gary Seloff



Mozambique tilapia

Photo by Shutterstock

Next steps

1. Survey FeralScan users
2. Data sharing
3. Training + community support
4. Connect landholders to NSW LLS and PestSmart website
5. App enhancements, dashboard, Advanced service (incl. SMS)
6. Remote data access (+ navigation)
7. Build community role in surveillance, detection and response



Contact me

Local groups

Your organisation

Research opportunities

Specific recommendations



**Thank you to everyone that has supported or assisted the
Project in recent years.**